

SAHM

12 · 2025

news



SOLUTIONS

VALUES

SUSTAINABILITY

80 YEARS
OF INNOVATIVE
WINDING SOLUTIONS



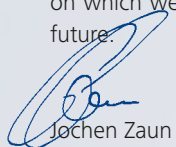
DEEP ROOTS FOR A STRONG FUTURE

Dear Readers,

In a world where change is happening faster and faster, it is values that give us orientation. Values that anchor us as markets are transformed, as new technologies emerge, and as performance expectations rise.

For more than 80 years, three key values have been at the heart of everything we do at SAHM – quality, commitment, and innovation. These values have guided us from the start, shaping our company and continuing to define how we think and work today.

For our customers, they stand for reliability, progress, and real access and availability. For us, they are the standard we live up to and the promise that we keep. We see these values as our roots. They serve as the solid foundation on which we stand – and from which we grow into the future.


Jochen Zaun
Managing Director



SAHM also got off to an early start in Asia – beginning with an office in Singapore, followed by a move to Kuala Lumpur, and coming finally to our current location in **Guangzhou, China** in 2007. From there, our team work together with the Sales and Service departments in Eschwege to serve the Asian market.



QUALITY THAT DELIVERS

Much has changed over the past 80 years – technologies, processes, markets. But one thing has remained the same – our dedication to building machines that our customers can depend on all around the world. At SAHM, quality is in our DNA. We develop machines that can handle high loads, keep processes stable, and reliably deliver reproducible results over many years. This is why our engineers design every detail of these machines to be as robust, precise and maintenance friendly as possible – so that even after extended periods of operation, SAHM winders continue to perform exactly as intended. Because we know that reliability is essential for every production process.



Every detail is critical when it comes to quality, for example the **scroll cam** – a highly stressed precision component that needs to deliver exact dimensional stability over millions of cycles to ensure consistent winding patterns. SAHM manufactures these scroll cam from through-hardened, high-strength alloy steel – to ensure significantly longer service life and higher precision.



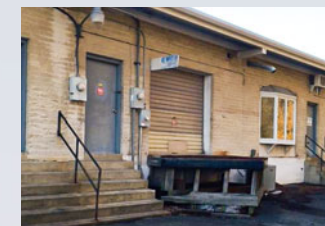
SAHM has had its **global headquarters in Eschwege, Germany**, since 1945. From here, we take care of our customers and direct our worldwide sales and service activities – supported by our international locations.



COMMITMENT THAT CONNECTS

For SAHM, commitment means more than just being available. It stands for a tangible bond with our customers. Only by experiencing markets firsthand is it possible to recognize needs early and to respond quickly and effectively. This bond builds trust and forms the basis for strong partnerships between SAHM and our valued clients. That's why we have made countless efforts over decades to be there when our customers need us.

To make this commitment tangible worldwide, we of course are in attendance where our customers and partners meet and mingle. At international trade fairs, we actively engage in dialogue, keep an eye on trends, and make sure that our solutions are a good step ahead of evolving global requirements.



In 1976, SAHM took its first steps into the USA. Volker Sahm founded the American Sahm Corporation in a small warehouse in Delaware. With the BANDOMAT 260E – especially developed for the U.S. market – the company had its first American bestseller and the beginning of an American success story. From these beginnings came today's **American Starlinger-Sahm Inc. located in Fountain Inn, South Carolina.**



First participation at the Hanover Industrial Trade Fair in 1952 serving an international public.

INNOVATION THAT SETS THE STANDARD

Knowledge is our competitive edge. At SAHM, our customers benefit not only from the first-class winding machines we produce, but also from our in-depth knowledge concerning all upstream and downstream processes. This holistic understanding makes the difference in building machines that rank among the best in the world. Ongoing innovations are what drive our success. We are proud to be the innovation leader in our industry. With curiosity and courage, we think big to consistently stay a step ahead.



Our innovative **Flexible Traverse Option** in the TWINSTAR II machine offers an entirely new level of flexibility in production. With freely configurable parameters for winding width, package shape, package positioning, and yarn reserve, this technology enables a high degree of customer-specific customization that makes it simple to use and always adjustable.

The **SAHM CB1** automates downstream package handling in a way that previously was only possible on a manual basis, setting new standards in automated process design.



Trade fairs,

for us, are much more than just exhibition spaces – they are places of dialogue, where ideas emerge and partnerships grow. 2025 was once again a year full of interesting and inspiring encounters.



Sharing knowledge ... SAHM Agent Meeting 2025, Batam Island

Shortly before ITMA ASIA, SAHM invited its Asian representatives to a joint meeting on Batam Island. This brought together participants from Japan, Indonesia, Taiwan, Thailand, South Korea, India, and China, as well as Angelika Huemer, Managing Partner of Starlinger. A shared dinner the evening before set the stage for a varied and engaging meeting, where SAHM presented new projects, technical advancements, and expanded service offerings. The participants contributed valuable market insights and regional perspectives – making for open, constructive and inspiring communication. A lively closing discussion made it very clear how important this type of dialogue is for strengthening co-operation and connecting all our stakeholders as we move forward together into the future.



Outlook 2026

After an intensive and highly successful trade fair year in 2025, we are looking ahead to 2026 with great anticipation. New events, fresh ideas, and exciting projects are waiting to be discovered. In particular, we are looking forward to several SAHM premieres:

For the first time, we will be exhibiting in the German Pavilion at **VIATT** in Vietnam, the leading trade fair for textiles and technical yarns in Southeast Asia.

At the **International Plastic Fair (IPF)** in Japan, a SAHM 780XE will be on live display at the booth of our representative ITOCHU Machine Technos, highlighting our expertise in monofilament applications.

And at the **JEC Forum Middle East**, the focus will be on carbon fibers – a field in which SAHM solutions are especially strong and well positioned.

We look forward to meeting many of you in person and to building new connections.

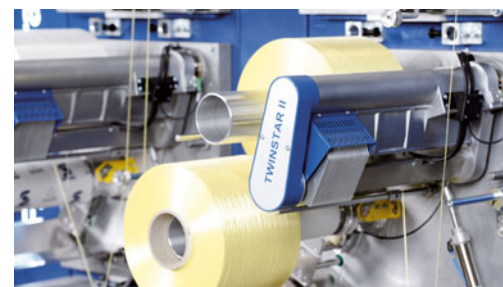
VIATT	Ho Chi Minh City, Vietnam	February 26 - 28, 2026
JEC WORLD	Paris, France	March 10 - 12, 2026
techtexsil	Frankfurt, Germany	April 21 - 26, 2026
JEC FORUM MIDDLE EAST	Riyadh, Saudi Arabia	May 5 - 6, 2026
techtexsil NORTH AMERICA	Raleigh, NC, USA	August 4 - 6, 2026
HINA COMPOSITES	Shanghai, China	September 1 - 3, 2026
ITMA ASIA	Shanghai, China	November 20 - 24, 2026
IPF	Tokio, Japan	December 1 - 5, 2026

OUR STARS ...



They are the heart of our portfolio – machines that have made history and continue to set the standard today. TWINSTAR, LinStar, CarbonStar, YarnStar 3+. Each of these distinctive machines combines technological precision with practical intelligence, embodying innovation as a living tradition at SAHM.

TWINSTAR



The Industry Standard

As the first automatic precision cross-winding machine fully developed for serial production, the TWINSTAR set new standards for processing high-performance fibers. Today, it continues to be the reference product worldwide for precision winding technology. Now as the TWINSTAR II featuring the Flexible Traverse Option, it remains at the forefront of modern winding machine technology after more than two decades – a true star in its class.

2001 ★ TWINSTAR I
2011 ★ TWINSTAR II
2024 ★ TWINSTAR II Flexible Traverse



CarbonStar

The Pace Setter

With the CarbonStar, SAHM launched its first automatic winder specifically developed for processing carbon fibers. At first, the use of such a system did not seem so necessary due to the comparatively slower production speed. But with the growth of carbon fiber manufacturing and the increasing number of winding positions, the waste-free automatic package change of the CarbonStar II has come to seem indispensable today.

2008 ★ CarbonStar
2014 ★ CarbonStar 2-cop
2017 ★ CarbonStar II



CarbonStar 2-cop

The Space Saver

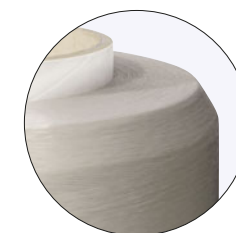
This machine makes exceptionally efficient use of production space by producing two quality packages on a single spindle. And it has an even more distinctive feature: Fluctuations in titration – commonly occurring with carbon fibers – normally lead to unequal package diameters. SAHM has developed a patented process that allows two packages of identical diameter to be produced on a single spindle. Consistent quality, outstanding space economy – a true star.

LinStar



The Contour Specialist

The LinStar was SAHM's first winding machine with a true linear motor – developed for large packages and tapes in flat weaving. Flexible traversing is its distinctive benefit. The machine allows for different package shapes and contours and a freely selectable traverse stroke, precisely adapted to the tube in use. A further LinStar benefit: The package edges can be given a customizable bevel, making the packages more robust during processing and handling.



YarnStar 3+

Coating - Cooling - Winding^{+Automation}



The All-In-One Solution

The YarnStar 3+ is a highly flexible single-yarn coating system, capable of both monocolour and bicolor coatings, and designed for maximum productivity in minimal space. Its intelligent thermofixation and relaxation system, with a water bath and integrated chill unit, ensures constant process conditions and the highest yarn quality at speeds of up to 1,500 m/min. With a semi-automated Easy Storage Doffer function, combinable core and coating materials, and complete technology from a single machine, the YarnStar 3+ combines efficiency, flexibility, and cost-effectiveness in a class of its own.

A NEW MILESTONE

A very special moment for us: In October 2025, the 1,000th project of the SAHM 400 series was realized.

The machine in question was the SAHM 411XE – the best-selling model in this series. The milestone machine was acquired by a family-owned company in the USA, a business that has grown through dedication and hard work and is now expanding its production capacities. The company already operates a SAHM 400 system with 27 winding heads. With the new installation, it is increasing to a total of 36 winding positions.

A big success that we were pleased and proud to celebrate together. Our special thanks go to the entire SAHM Converting team and to all the colleagues who helped make this milestone possible.

By the way:

The original "Ur"-model 400E made its first major appearance at the ITMA exhibition in Hanover in 1991 – where it attracted lots of interest across the industry.



SAHM SERVICE "TOOL BOX"

Our SAHM Service Tool Box has the right solution for whatever challenge you're facing. Online or directly on-site at your facility – we are there for you wherever and whenever you need us.

AFTER-SALES & REPAIR

We keep your production up and running. From our tried and tested expert assistance to original spare parts, SAHM is there for all your service needs.

SAHM SLAs

More efficiency. Less downtime. SAHM Service Level Agreements (SLAs) help you get the most out of your system – reliable, predictable, and high-performing.

SERVICE PLATFORM

Discover our digital service platform and experience maximum transparency and efficiency for all your production requirements.

REMOTE SUPPORT

With Remote Support services from SAHM, our service technicians are available to provide prompt and expert trouble-shooting input to solve problems at your site as they occur.



SMARTVIEW

As a web-based monitoring tool, SAHM SmartView provides a clear overview of all winding stations at all times and supports you with efficient management of your production processes.

SAHM ACADEMY

Get further training for your employees and open up new potential for your company. The SAHM Academy offers need-based training directly relevant for your applications.

Are you interested in finding out more about SAHM Services? Contact us by phone or email: Service Hotline +49 5651 804-256 service@sahmwinder.com



Our social media channels deliver news, exciting insights, and background information straight from the source. Visit us on Instagram and LinkedIn and stay connected. #TheFutureOfWinding



www.instagram.com/sahmwinder



linkedin.com/company/georg-sahm-gmbh-&-co-kg



ELECTRONICS REDEFINED

Modernized electronic architecture is making SAHM future-ready. A modular design with powerful state-of-the-art processors is bringing a new level of intelligence and higher speeds to machine control. Vector-oriented systems and high data transmission rates provide enhanced performance while at the same time increasing energy efficiency.

STATE-OF-THE-ART CONTROL

In our development department, work is already underway on the machine control systems of tomorrow. A new HMI operating concept will replace traditional parameterization, focusing instead on intuitive interaction. This will enable even simpler and more natural machine operation in the future.

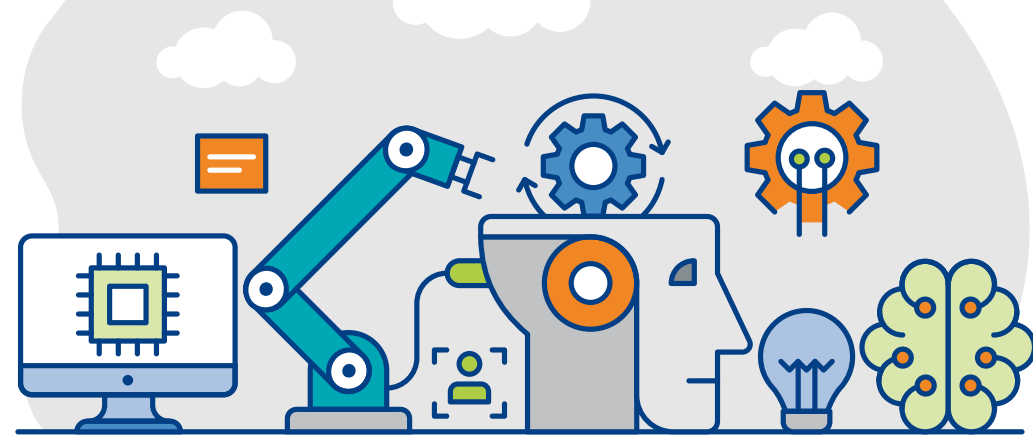
AI INSIDE

Intelligent algorithms are being integrated into SAHM technology. In addition to optimizing winding patterns for parallel winding, intelligent sensor analysis serves as the basis for calculating operating parameters and detecting maintenance requirements or faults. The goal is to make SAHM machines even more efficient, precise, and predictive in daily operation.

FUTURE LAB

Turning ideas into innovations

In the SAHM Future Lab, we develop new concepts, technologies and functions to make our machines even smarter, more efficient and more user-friendly.



NEW IN LINE

Another new winding machine is already waiting in the wings: A start-up winder for monofilament applications will soon be added to the SAHM product line. Until now, customers had to source this type of winder externally. Going forward, they will also be able to rely in this area on proven SAHM technology. A further step towards our goal of delivering complete, fully integrated solutions from a single source.

TEAMWORK IN MOTION

The next generation of doffing automation is taking shape. In future, yarn knotting during package changes will be fully automated, starting with selected types and materials. This is a function that will be handled by the KR1 from Superba. Working together with the SAHM CB1, this will provide a precise, continuous process: package change, pushing off, removal, knotting, transport, and storage – all fully automated, efficient, and reliable.

TEST PASSED

The SAHM CB1 has successfully completed a six-month field test in a high-performance fiber production facility and will soon be transitioning into continuous operation at customer sites. The CB1's robust, fully closed design also makes it suitable for other application areas, with additional trials in planning.

SAVE THE DATE!

The teamwork between the CB1 and the KR1 will be live on display for the first time at techtextil 2026 in Frankfurt, Germany. At the SAHM booth from April 21 to 26, the CB1 and KR1 will be showing how seamless automation works in practice. Also in attendance will be our colleagues from Superba, who will be taking part as our co-exhibitors.



RESOURCE EFFICIENCY



Every rotation counts. Our optimized drive systems reduce energy consumption and enable more resource-efficient production throughout the entire machine lifecycle.

RETROFITTING



To ensure that our highly durable machines not only last for decades but also keep pace technologically, SAHM offers a range of retrofitting solutions. These modernization measures include conversion kits, for example for integrating modern frequency converters or upgrading to more advanced display and control concepts. Retrofitting lets our customers operate their systems for longer – on a cost-optimized and sustainable basis.

LONGEVITY



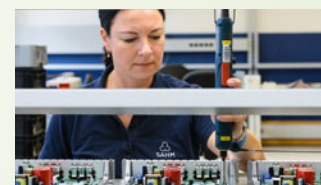
The robust design, premium materials, and maintenance-friendly engineering of our machines enable an exceptionally long service life – often exceeding 50 years. This exceptional durability naturally contributes to a responsible use of resources and to a lasting reduction of ecological footprints.

TRAINING



We invest in people – not just in machines. Today's apprentices at SAHM are tomorrow's skilled professionals and team leaders – often with impressively long careers at the company.

SAFETY AT WORK



We invest in safe workplaces, establish clear processes and foster a culture of collaboration. This includes ergonomic solutions such as height-adjustable desks and workbenches that support healthy working practices and long-term well-being.

SOCIAL RESPONSIBILITY



For us, sustainability also means responsibility toward society. That is why we support social initiatives through donations to local fire brigades, food banks, animal shelters, and kindergartens, and take part in charity runs supporting cancer research. We also make it possible for our employees to engage in volunteer work by granting time off. In recognition of these activities, we were awarded the Employer Award by the Prime Minister of the State of Hesse – an honor that motivates us to continue taking action where our contribution truly makes a difference.

AT OUR SITE



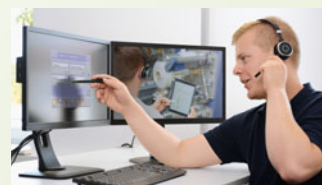
We are increasingly relying on digital document management to reduce paper and toner consumption. By recovering waste heat from compressed air systems, our Sustainable Hall Conditioning system ensures optimal working conditions throughout the year – while reducing CO₂ emissions by up to 95%.

OIL-FREE TECHNOLOGY



Thanks to new technologies such as linear traversing, our machines are virtually maintenance-free. And there's hardly any need to make use of petroleum-based auxiliary materials such as greases and lubricants. One more step towards greater sustainability and resource conservation.

DIGITALLY CONNECTED



Digital services are now an essential part of SAHM's service world. Our technicians can diagnose machine issues worldwide in real time, resolve them quickly, or provide on-site support as needed. With the SAHM Service Platform we provide 24/7 access to manuals, maintenance videos and service requests – an efficient solution that saves thousands of kilometers flying kilometers every year.

HEALTH PROGRAM



The health of our employees is a central pillar of our approach to sustainable management. In addition to company sports activities, we offer free gym memberships and a fitness tracking app. The newly introduced SAHM Health Day together with a monthly podcast covering topics such as stress management, nutrition, smoking cessation, and back health, are further elements of our program.

Anniversaries like these in our 80th year, remind us of what really matters – the people who bring our values and machines to life with their experience and dedication. Our heartfelt thanks for the loyalty and dedication:

40 years

Ortwin Munk, Silke Füllgrabe, Markus Wolf

25 years

André Borkenhagen, Sascha Asbrand

10 years

Jannis Werner, Michelle Bedau

ANNIVERSARIES



190 YEARS STARLINGER

In July 2025, our parent company Starlinger celebrated its 190th anniversary. We were proud to be a part of this special event – a milestone that highlighted the trust and shared spirit that unite us.



TRAINEES 2025

In summer, five new apprentices got started with us. They are embarking on an exciting journey into the world of winding technology – full of new experiences, challenges, and opportunities. We look forward to supporting them and watching them grow.

JOHANNISFEST

Eschwege's annual city celebration made for happy times and, as always, we were right in the middle of it. At the legendary Monday Frühschoppen – a traditional late-morning social gathering – people laughed, celebrated and raised a glass together. Eschwege's "JoFest" has long been more than just a date in the calendar for us at SAHM – it's tradition, team spirit, and a sense of home all in one.

IN MEMORY OF VOLKER SAHM

We mourn the passing of Volker Sahn, who from 1970 onwards played a decisive role in shaping our company as Managing Director and visionary leader. In 1983, he took the bold step of crossing the Atlantic to Greenville, South Carolina (USA), to open up the American market. Volker Sahn passed away on 15 September 2025 at the age of 87 in Greenville.



Photo: Personal archive

ESCH-
WE-
H-
HOUSE

TRUST.

Made with SAHM Winding Technology.

SAHM
news

Imprint

SAHM news 12/2025,
published 01/2026

Publisher

Georg Sahm GmbH & Co. KG
Sudetenlandstrasse 33
37269 Eschwege, Germany
Phone: +49/5651 804 -0
www.sahmwinder.com
info@sahmwinder.com

Editor

Heike Kollmann
(Responsible in accordance
with the German Press Law)
Head of Marketing
Phone: +49/5651 804-102
hkollmann@sahmwinder.com
Nicole Kempka
Assistant to the Management

Design & Realization
BusinessWerbung GmbH,
Kassel, Germany

Photography
Archiv & schellenberger,
Eschwege, Germany

SAHM.

A MEMBER OF STARLINGER GROUP.

The articles published in this issue are protected by copyright and are the responsibility of the respective author. All rights reserved. No part of this publication may be reproduced without written permission from the publisher. Reprinting including excerpts is only allowed with the permission of the publisher. All information provided to the best of our knowledge but without guarantee.

Image credits

P.2-3: germany map and flag, [Freepik.com/@dystock](https://www.freepik.com/@dystock);
USA Flag, ID 562377919, [Snyde/Shutterstock.com](https://www.shutterstock.com);
China Flag, ID 543402703, [Snyde/Shutterstock.com](https://www.shutterstock.com);
P.8-9: View of plastic tool box mock-up, [@freepik](https://www.freepik.com); Medium shot blurry woman holding phone, [Freepik.com/freepik](https://www.freepik.com); Set of black social media logos with new x logo, [@juicy_fish](https://www.freepik.com);
Arrow style number of days left promotional banner set, [@starline](https://www.freepik.com); P.9: A creative design illustration of brain development, [@vectorlab](https://www.freepik.com);
P.10: Flying leaves design suitable for design elements, [@vervenaaa3](https://www.freepik.com); Backpage: Male mountain climber pulling rope taut, ID 200257669-002 by David Trood, Getty Images



WINDING SOLUTIONS